

Fellowship-Wide Services *News*

Vol. 19, No. 2 / May 2005

A Fork in the Road: *Which Way Do You Want to Go?*

**Board of Trustees
Committee Reports**
Page 3



Tradition Six
Page 5



Financial Update
Page 11



I get sentimental when I think of S.L.A.A. and what might have become of me if I did not find and embrace this Fellowship. This program and my fellow sex and love addicts helped me to get my dignity, self-respect, and my life back. It is for this reason that I want to share my thoughts with you. It is a nightmare to think of what it might have been like for me on May 6, 1989 had there been no S.L.A.A. meeting. I ask you to read this article and to think of what it might have been like for you if you did not find the Fellowship and to think more globally of what WE might do to make this program available to those in need.

*"I shall be telling this with a sigh
Somewhere ages and ages hence:*

*two roads diverged in a wood, and I --
I took the one less traveled by,
And that has made all the difference."*

From "Road Not Taken"-Robert Frost

**"...think more
globally of what
WE might do to
make this
program available
to those in need."**

This poem reflects the choices we have as a Fellowship regarding the way we handle our finances at this "fork in the road." These paths, seemingly similar at the onset, diverge, and the question becomes, "Which path do we take?"

One can opt for the common route, or one can move along the path that is unknown and perhaps more difficult. We, as a Fellowship, are ultimately responsible for the future of our members. Is there a choice that stands above another?

(Continued on page 7)

The Most Spiritual Tradition Is 7!

Of all of S.L.A.A.'s 12 Traditions, Tradition 7 may be the most spiritual. Some may dispute this by saying that Tradition 7 doesn't even mention a Higher Power; whereas Tradition 2 speaks about a loving God and Tradition 12 discusses the spiritual foundation of the 12 Traditions. So, just how is Tradition 7 so spiritual?

Several of the Traditions appear to set some type of limit. This includes Tradition 2's limit that trusted servants do not govern, Tradition 5's limit that groups have only one primary purpose, and the Traditions that regard anonymity. Therefore, a lot of the Traditions' focus is on making sure that the Fellowship is not harmed.

However, Tradition 7 asks us to do something completely different - provide enough financial support to ensure that S.L.A.A. continues on and grows! This means

(Continued on page 12)

What's in This Issue?

This F.W.S. News issue and the related bulk mailing is full of information connected to upcoming events and the status of F.W.S.' financial situation.

You will notice some changes to the formatting of our contributions summary. In addition, we have a couple of new products available...Journal articles Step Booklet and the 2005 Updated World Directory. We also have reminded people that May is individual contribution month...so please contribute and spread the word to others who can donate as well.

Highlights of this issue include:

- Without F.W.S. where would we be as individuals in recovery? (Page 1)
- A look at Step & Tradition 6 (Page 4-5)
- Revamped Contribution Summary (Page 8)
- Need for assistance on the Board Human Resources Committee (Page 15)
- New Journal Stories booklet on the Steps (Page 18)
- May is Individual Contribution month (Page 20)

Please share this information with your groups.

(See our F.W.S. News subscription form on page 14)

Please Note: An additional unscheduled vacancy on the BOT has occurred due to the resignation of one member.

F.W.S. News

The quarterly news publication of
**The Augustine Fellowship,
 Sex & Love Addicts Anonymous,
 Fellowship-Wide Services, Inc.**

For subscription information, contact

**F.W.S. Office
 P.O. Box 338
 Norwood, MA 02062-0338 U.S.A.
 Tel: (001) 781-255-8825
 Fax: (001) 781-255-9190
 www.slaafws.org**

One Year Individual Subscription \$5.00
 One Year Group Subscription \$26.00
 (10 copies per issue)
 10 Copies of Any One Issue \$6.50
 (1 issue, 10 copies)

S.L.A.A.'s Board of Trustees (BOT)

As per the S.L.A.A. Bylaws Article VI: Board of Trustees, Section 3, Duties & Responsibilities:

The Board of Trustees shall act as the guardian of the 12 Steps and 12 Traditions, ensuring that there are no alterations except by action of the Fellowship-Wide Services S.L.A.A. Conference, as set forth in these Articles.... The Board of Trustees shall act as spokesperson for the Fellowship in all matters affecting S.L.A.A. as a whole; provide for and supervise publications of the Fellowship; supervise and guide public information and attraction efforts of the Fellowship; provide counsel and guidance to member groups and to new groups; furnish a medium for the interchange of ideas between groups and arrange for the Fellowship-Wide Services S.L.A.A. Conference Annual Meeting.

Board of Trustees 2004-2005

Marcella M., Chair, term expires 2005
 Cristina C., term expires 2005
 Deborah W., term expires 2005
 John C., term expires 2006
 Roger R., term expires 2006
 Robin S., Resigned
 Danielle P., term expires 2007
 Chris D., term expires 2007

Officers

President: Deborah W.
 Treasurer: Roger R.
 Clerk: Danielle P.
 Resident Agent: Valerie Jacoby, Esq.

The following are subcommittees of the BOT performing its duties and responsibilities:

Finance & Operating Committee (BF&OC)

Focuses on the matters of a financial nature of which have potential financial implications and the operations of the Fellowship-Wide Services (F.W.S.) office.

Governance & Nominating Committee (BG&NC)

Focuses on the internal activities and procedures of the BOT to insure its long-term effectiveness.

Public Relations Committee (BPRC)

Focuses on matters relating to oral or written communications emanating from F.W.S.

Board of Trustees Committee Reports

Board Finance & Operating Committee (BF&OC)

The BF&OC has been meeting approximately twice a month during the past quarter. The cash situation has been eased slightly, which is typical of this time of the year for the Fellowship. There has been some transition in membership of the BF&OC in that we have had two resignations from the committee and have welcomed Danielle P. (BOT) member and Richard C. (member-at-large) to our membership and are making meaningful contributions to the committee.

Following are a few of the activities in which the BF&OC has been involved:

- Designing the new Travel Equalization Fund policy which was forwarded to the Board of Trustees and passed.
- Reviewing policies of income distribution from the Endowment Fund and proposing the details of the procedures passed by the Board which results in 5% of the annual value of the fund to be distributed to the F.W.S. office for current operations.
- Appointing a new accountant following the resignation of the previous individual who held this position.
- Proposing for overall BOT discussion the entire issue of how to improve our fundraising activities.
- Dealing with staff issues regarding pay, benefits, and work schedule.
- The Endowment Fund has received a gift of \$150,000 which will greatly help the Fellowship in the future. Since 5% of the amount in the fund is distributed to the fellowship annually, this will mean an additional \$7,500 annually to help support operations.
- In the future when contributions are reported in the F.W.S. News, we intend to highlight the total number of donors in an effort to try to increase the total numbers of those supporting the Fellowship through contributions. We also are creating various categories of donations to recognize those who have served the Fellowship with significant contributions.

Roger R., Chair, Board Finance & Operating Committee

Board Governance & Nominating Committee (BG&NC)

The BG&NC is the branch of the Board of Trustees (BOT) that focuses on the internal activities and

procedures of the BOT to ensure its long term effectiveness. In other words, we handle items to do with governing the Board, as well as nominating-related work.

Items that we have been working on since our last report:

- Set up quarterly Fellowship Teleconference Calls with the BOT & F.W.S staff members. (If you are interested in knowing more about this, please contact either Danielle P. at danielle_p@slaafws.org or Ruth at info@slaafws.org).
- Created descriptions of FWS Liaisons for each BOT Committee
- Started to work on Regional Discussion Panels (hopefully coming soon to your area!)
- Replied to concerns expressed by members of the Fellowship regarding the Traditions (ie: Non-S.L.A.A. Materials/Structure at S.L.A.A. Events).
- Reviewed ESC recommendations and will soon make recommendations to the Board for ongoing strategic planning.
- Continuing to update & maintain the Volunteer Resource List.
- Continuing to work on the International Service Structure.
- Continuing to work on the Conference Accountability Process.
- Actively working to fill BOT positions for the upcoming year.
- Addressing revisiting the translation process.

The 'big' projects that we are continuing to work on include the Conference Accountability Process, International Service Structure, and Regional Discussion Panels, to name a few. We will have more to report on in the near future.

We are always open to hearing from you, and we welcome any members who are willing to volunteer their services or who may have questions regarding any of the projects listed here. Please help us to bridge the communication gap between the BOT, F.W.S. office, and you, a general S.L.A.A. member. And in turn, we continue to offer our services to the addict who still suffers.

Danielle P., Chair, Board Governance & Nominating Committee

(Continued on page 12)

Step 6.

How timely the request for a member of the fellowship to write about Step 6 came to me. I had just returned from a 5-day silent retreat at a nearby monastery and as God would have it, I worked this step. I realized that I have been going into the silence three times a year for 8 years now. It is like going home, and I rely on my Higher Power to guide me each retreat on what the theme will be.

As I was packing my car I happened to see a book, *Drop the Rock*, on my bookshelf and threw it in my briefcase. Little did I know that I would pick it up my first morning on retreat and begin reading about Step 6.

The words of being “entirely ready” and “remove all” rang a deep chord in my being. **SURRENDER**, like a neon sign, kept flashing in my mind! I got it; Step 6 is about surrendering once more, yet again, and daily. I

had already surrendered my addiction(s) in Step 1 when I admitted I was powerless and my life was unmanageable. I had even surrendered in Step 3 when I made a decision to turn my life and my will over to a God of my understanding. However, the surrender I was experiencing with this Step was deep down: it required all of me, not part.

This past year has been one of my worst years in sobriety. First my mother died, then my brother followed her 4 months later. In between I slipped after 4 years of sobriety in this program, and I finished the year by leaving a 10-month relationship. By mid-January I was suffering not only emotionally but also physically with migraines 3-4 times a week that were incapacitating. My torment was so intense that the only relief was going to meetings and calling my sponsor with abundant tears. I restarted therapy, saw my doctor, and was placed on medication to control the headaches.

So, while on retreat I knew I would have more time to pray, meditate and reflect. It was also a cleansing time. A time to surrender my suffering to my Higher Power and become ready to let go not only my hurt but my character defects that contribute significantly

to my pain.

I started a ritual of getting on my knees and asking God to remake me to God’s will, in God’s time, on God’s terms. I offered up my suffering to the higher good, and I became entirely ready to let go all my addictions and defects of character. As I reviewed the last 11 years of sobriety from alcohol and drugs, I saw that I had given up nicotine 7 years ago, and 5 years ago started dealing with my sex and love addiction. I was making progress and yet here I was with my grief and loss. I just knew I was to surrender it all, yield to the flow of life, let go my attachment to the outcome, and most of all TRUST that I am taken care of even at my darkest moments.

How do I describe the peace I felt upon doing this? I cannot! I still have times where tears of sadness

come without notice, yet what reassure me are the joy of being alive and working this Step of complete abandon to my Higher Power. Accepting life on life’s terms has always been one of my stumbling blocks; accepting death and loss as part of life and that I will feel pain and grief are all new for me. Like my sponsor said, if I were to call and not cry she would be concerned that I was in my addiction.

In the past I have used anything and anybody to avoid, numb or run from my pain. Today, I got down on my knees and asked yet again that my Higher Power remove from me every single defect of character that stands in the way of my being useful, and for that I am ever so grateful. Today, I have not acted out!

“Were entirely ready to have God remove all of these defects of character.”



Rita H.
Quebec, Canada

Tradition 6.

Tradition Six addresses the addict's character defects of willfulness and pride. Once the sex and love addict has found something that works for them, there is the overwhelming desire to spread the word and show everyone else how they can improve too. There is the sense of power and prestige that comes from leading others into salvation. Wheeling and dealing gives us that sense of excitement and purpose that our addiction did. Tradition Six also helps us to avoid violating the traditions of anonymity and helping others by attraction rather than promotion.

Early on it was decided that members of S.L.A.A. would determine for themselves what their personal bottom lines would be. There was no insistence that any certain behaviors had to be avoided in order to be part of S.L.A.A. There are some members who feel strongly that masturbation is an addictive sexual behavior while other members believe that it is a healthy outlet. There are other recovery programs that are based on each side of this debate. Since we do not endorse any specific one way to reach sobriety or set bottom lines, we are not diverted from our

central purpose of carrying our message to all who suffer.

"An S.L.A.A. group or S.L.A.A. as a whole ought never endorse, finance, or lend the S.L.A.A. name to any related facility or outside enterprise, lest problems of money, property, or prestige divert us from our primary purpose."

There is also the concern about what is Conference-approved literature. Each year Fellowship-Wide Services hosts an Annual Business Meeting that considers a variety of material designed to help the members of S.L.A.A. We do not endorse any recovery setting or organization outside of S.L.A.A. The literature that these programs publish can be very helpful to the sex and love addict, but again S.L.A.A. does not endorse nor promote any of these books as a requirement in order to be part of S.L.A.A. There is no requirement that

any specific literature be used at a local group meeting. It is recommended that literature that is not Conference-approved should not be used during an S.L.A.A. group meeting. It is also unacceptable to receive reimbursement from outside organizations for approval and use of their publications.

At a local group meeting there is a nearby rehabilitation center that sends its inpatients to the

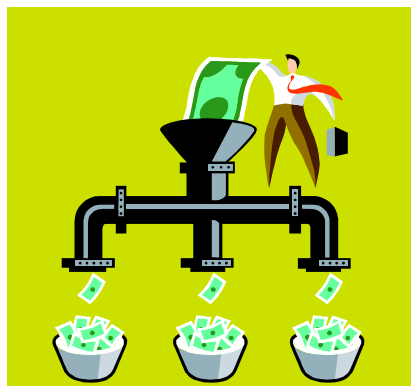
(Continued on page 6)

Checklist for Tradition 6.

1. Should my fellow group members and I go out and raise money to endow several [S.L.]A.A. beds in our local hospital/treatment center?
2. Is it good for a group to lease a small building?
3. Are all the officers and members of our local club for [S.L.]A.A.s familiar with "12 Recommended Guidelines for Dealing with Media/Public Relations Opportunities" (which is available free from [F.W.S.]?)
4. Should the secretary of our group serve on the mayor's advisory committee on [sex and love addiction]?
5. Some [sex and love addicts] will stay around [S.L.]A.A. only if we support an outside charity or local issue. If this is what is required to carry the message to them, should we have these facilities?

Reproduced and Adapted from A.A.'s *Tradition Checklist from the A.A. Grapevine*, published November 1969 through September 1971.

(Tradition 6, Continued from page 5)



weekly meetings. It is an opportunity for acutely suffering addicts to participate in meetings with others who have some more experience, strength, and hope.

After discharge from the center many members choose to continue to attend this local group meeting. Therefore this meeting is well attended and there are many members willing to give support and service to all who suffer.

During the meetings the name of the rehabilitation center is frequently referred to by name because it has been such an important part of their recovery. However, there are a number of newcomers who come from the community who have never heard of this rehab program. The impression these newcomers get from the sharing is that this rehabilitation center is endorsed by S.L.A.A. or even part of S.L.A.A. Others get the impression that they have to go to the center for in-patient therapy in order to be part of S.L.A.A. recovery. The impression is that there is only one right way to get S.L.A.A. recovery and this is just another reason why they will never be able to deal with this addiction.

At a monthly business meeting, a member brought up this issue of not endorsing any outside program regardless of any possible merits or faults. It was agreed by group conscience that whenever anyone is sharing that they should maintain anonymity about the name of all outside facilities attended so that there is no misunderstanding about what is endorsed by S.L.A.A. The names of specific therapists and therapies are also anonymous.

Recently a long time member of S.L.A.A. died. He was a very grateful recovering addict and sponsored many of us over the years. We were very sad to see him leave us but we were very glad to have known him. There were many people from S.L.A.A. and other recovery programs who wanted to recognize his service and strength. At the Intergroup meeting there was a motion to dedicate a bench in a city park to his memory with his name on it. The motion wanted

individuals to donate money for this and asked Intergroup to promote the fundraiser and handle the money that would be collected. The Intergroup felt strongly that this was a very good cause but voted not to handle the money nor promote the fundraiser because that would violate the intention of Tradition Six and having this person's name on the city park bench would promote the individual over principle as well as violate this person's anonymity.

By practicing these traditions on a daily basis we avoid the pitfalls of our addiction and perpetuate the primary purpose of S.L.A.A. Whenever there is any question about what is the next right thing, it is usually a good idea to see how it fits in with all twelve traditions.

***In service,
Steven D., Pennsylvania***

DON'T FORGET!

Golden Gate to Freedom



The S.L.A.A. 2005 International Recovery Convention

July 8-10, 2005

San Francisco, California

The S.L.A.A. San Francisco Bay Area Fellowship warmly welcomes members, friends and family from all over the world. Join us for a weekend of recovery, fun and community.

- Workshops
- Speaker/Topic Meetings
- Panel Discussions
- Auction
- Talent Show

**Questions? Contact the
Local Planning Committee**

Email: convention2005@slaa-sfeb.org
Tel: (001) 415-979-4715

(A Fork in the Road, Continued from page 1)

As you know, our Fellowship-Wide Services (F.W.S.) office has been in a state of perpetual need. Some of you are tired of hearing about the financial need and the pleas for help. Others have become immune to them. On the other hand, many of you have responded positively by passing an extra basket at your local meeting, holding a fundraising event in your Intergroup, or by purchasing more materials, etc. Some feel that the best way to address this issue is to focus on the 5th Tradition- bring more persons into the rooms and increase contributions via the 7th Tradition. While the office staff is grateful for the positive response, I know that these monies have helped us only to keep the office open and the basic functions going. But to those of us who have broader ideas of growth for the Fellowship, especially when addressing the needs of our brothers and sisters in other countries, it is not enough.

Currently, our office is open four days a week and is staffed by our Executive Director, one other full-time person, and three part-time staff members. The office once was open on Friday and services have been cut back. This has included the elimination of the Long Distance Sponsorship Program.

The office maintains the database for all registered meetings worldwide, the online store and the website. It is the publisher and distributor for all S.L.A.A. literature and materials including books, pamphlets, tapes, medallions, etc. It is the hub for the organization of International Recovery Conventions, Conference Committee work (that includes creating new literature, doing prison outreach, and developing ways to reach the sex and love addict who still suffers in other parts of the world) and the Annual Business Meeting. F.W.S. also works with the Board of Trustees to perform its duties, including holding elections, filing the appropriate business forms, and addressing financial and legal concerns.

The F.W.S. Office provides information for those who need it, responds to public information requests from

clergy, therapists, treatment centers, and the public media (T.V., radio, film, and press), assists desperate addicts in need of direction, and so many more tasks. The office is the "head" to our "body" (the rest of us).

"...what could happen to you personally, to your home groups, to the groups in your community, and to your Intergroup if we continue to struggle financially?"

Imagine for a moment that our funding became inadequate to support the operations of our Fellowship... what could happen to you personally, to your home groups, to the groups in your community, and to your Intergroup if we continue to struggle financially? Would we be able to continue to have meetings? Where would we get our books and pamphlets for the newcomer? Who would print and distribute the literature? What would happen to your personal recovery if there were no meetings? How long could we survive with no centralized place for information, data, organization, etc.? If the office closed completely, what would happen? Imagine... what would happen to a "body" without a "head?"

If we do not finance our office operations, I can foresee that we will have to reduce the staff even further, perhaps limiting the office to becoming simply a warehouse for our books and literature with volunteers to do the work. Most likely, those groups in more populated areas in the U.S. would continue to function for a while, supporting the individual groups via an Intergroup. With no other means of support, lone groups would probably fold more immediately.

"Eventually, some might attend other "S" Fellowships, but what would happen to the "L" part of our Fellowship?"

Eventually, some might attend other "S" Fellowships, but what would happen to the "L" part of our Fellowship? The business of the Fellowship would cease to exist, meaning there would be

no unified way to develop and pass new literature or motions made to improve the Fellowship as a whole. There would be no comprehensive database and, if we were to move or to travel, meetings would be difficult if not impossible to find. How would the outreach happen if there were no centralized place for contact? What would happen to our meetings in other countries? Who would provide outreach and answer the e-mails and calls from desperate individuals looking for meeting information, professionals from treatment

(Continued on page 16)

Group Contribution Summary (January-April, 2005)

GOLDEN BRAID LEGACY GIVERS \$1,000.00 — \$9,999.99 Jan-Apr. 2005 Average for category = \$2,727.45 per GROUP

Name/Group	State/Country	Credit Amt	Reason
LOS ANGELES INTERGROUP	CA	2,702.89	cont regular grp.

Name/Group	State/Country	Credit Amt	Reason
PALM BEACH COUNTY INTERGROUP--Special Inter-group Auction for FWS & regular contributions	FL	2,752.00	cont fin. crisis

GRATITUDE GIVERS \$500.00 — \$999.99 Jan-Apr, 2005 Average for category = \$708.50 per GROUP

AMSTERDAM WED STEP	THE NETHERLANDS	610.00	cont fin. crisis
--------------------	-----------------	--------	------------------

TUCSON AREA INTERGROUP	AZ	623.96	cont regular grp.
NEW YORK WED MEN'S	NY	891.55	cont regular grp.

SPONSORS OF THE AUGUSTINE FELLOWSHIP \$250.00—\$499.99 Jan-Apr, 2005 Average for category = \$313.11 per GROUP

HOLLYWOOD SUN FOCUS ON SPIRITUALITY	CA	342.28	cont regular grp.
SACRAMENTO AREA INTERGROUP--Dec-Feb contribution	CA	331.20	cont regular grp.
SAN FRANCISCO/EAST BAY INTERGROUP	CA	275.20	cont regular grp.
LANTANA MON BY THE BOOK	FL	266.50	cont regular grp.
ATLANTA SAT	GA	270.35	cont regular grp.
HONOLULU GROUPS	HI	450.00	cont regular grp.
BOSTON WED SOS (SHARING OUR STRENGTH) MEN'S	MA	451.54	cont regular grp.

NEW ENGLAND INTERGROUP	MA	328.79	cont regular grp.
NEW YORK FRI SEXUAL & EMOTIONAL ANORECTICS	NY	264.68	cont regular grp.
NEWTONVILLE WED WOMEN WINNERS	NY	250.00	cont regular grp.
PHILADELPHIA MON-FRI NEW LEAF	PA	275.00	cont regular grp.
MANCHESTER SAT FAMILY HISTORY GROUP	UNITED KINGDOM	356.00	cont regular grp.
UNITED KINGDOM INTERGROUP	UNITED KINGDOM	272.00	cont regular grp.
SEATTLE INTERGROUP	WA	250.00	cont regular grp.

YOU ARE NOT ALONE CLUB \$100.00—\$249.99 Jan-Apr, 2005 Average for category = \$151.97 per GROUP

PRESCOTT MON	AZ	107.22	cont regular grp.
SAN DIEGO INTERGROUP	CA	210.00	cont regular grp.
ENCINITAS SAT SLAA BOOK/DISCUSSION	CA	200.00	cont regular grp.
BERKELEY FRI APPLYING THE PRINCIPLES	CA	194.00	cont regular grp.
ENCINITAS FRI	CA	174.30	cont regular grp.
BERKELEY TUE MEN'S COMMITMENT TO RECOVERY	CA	170.00	cont regular grp.
SAN DIEGO SUN STEP STUDY/GETTING CURRENT	CA	150.00	cont regular grp.
SAN FRANCISCO FRI BEG.YOUR WEEKEND IN RECOVERY	CA	114.00	cont regular grp.
SAN RAFAEL/TERRA LINDA SAT ANOREXIA/WRITING DISCUSSION	CA	100.39	cont fin. crisis
BERKELEY THU MEN'S STEP STUDY	CA	100.00	cont regular grp.
ENCINITAS SUN MIXED	CA	100.00	cont regular grp.
IRVINE SUN BEGINNERS MIXED	CA	100.00	cont regular grp.
TORONTO FRI	CANADA	200.00	cont regular grp.
MONTREAL WED LA CLE DE L'AME	CANADA	167.89	cont regular grp.
DENVER WED	CO	135.00	cont regular grp.
WASHINGTON THU	DC	100.00	cont regular grp.
WILMINGTON WED NEW STRAW GRP.	DE	217.56	cont regular grp.
SARASOTA MON	FL	160.75	cont regular grp.
ATLANTA MON-FRI NOON ACT WITH COURAGE	GA	200.00	cont regular grp.
CHICAGO SAT 12 & 12	IL	100.00	cont regular grp.
SOMERVILLE SUN SOS (SERENITY ON SUNDAY)	MA	132.74	cont regular grp.
SILVER SPRING WED BEGINNERS	MD	198.00	cont regular grp.

NORTHWOOD/SILVER SPRING MON	MD	100.00	cont regular grp.
PORTLAND FRI FELLOWSHIP	ME	168.00	cont regular grp.
KANSAS CITY THU SHAME TO GRACE	MO	200.00	cont regular grp.
WELLINGTON INTERGROUP	NEW ZEALAND	183.00	cont regular grp.
CHERRY HILL SUN	NJ	130.00	cont gratitude
MORRISTOWN TUE CLOSED REVOLVING FORMAT	NJ	100.00	cont regular grp.
MAJORSTUA TUE	NORWAY	150.00	cont regular grp.
NEW YORK TUE WITHDRAWAL	NY	203.76	cont regular grp.
NEW YORK TUE WOMEN'S HOME GRP.	NY	128.00	cont regular grp.
CLEVELAND FRI RETURN TO DIGNITY	OH	223.60	cont regular grp.
VANDALIA POLK GROVE MON	OH	200.00	cont regular grp.
CHAGRIN FALLS MON START YOUR ENGINES	OH	125.00	cont regular grp.
OKLAHOMA CITY TUE/FRI	OK	120.00	cont regular grp.
BRYN MAWR SUN	PA	203.00	cont fin. crisis
PHILADELPHIA SAT SEEDS OF WHOLENESS	PA	200.00	cont regular grp.
SCRANTON GROUPS	PA	200.00	cont regular grp.
PAOLI SAT	PA	185.30	cont regular grp.
PHILADELPHIA WED	PA	113.35	cont regular grp.
SALT LAKE CITY SUN SOLUTION SEEKERS	UT	100.00	cont regular grp.
WINOOSKI/BURLINGTON SUN LAST RESORT GRP.	VT	102.65	cont regular grp.
SEATTLE FRI I LOVE MYSELF TODAY	WA	171.00	cont regular grp.
MILWAUKEE SAT MORN	WI	100.00	cont regular grp.

continued on next page

When making contributions, please be sure to clearly mark how you would like them attributed. If your contribution is not listed or has been misattributed, please let us know so that it can be corrected!

Group Contribution Summary (January-April, 2005)

FRIENDS OF THE FELLOWSHIP \$5.00—\$99.99
Jan-Apr, 2005 Average for category = \$45.23 per GROUP

Name/Group	State/Country	Credit Amt	Reason
DAPHNE FRI DISCOVERY	AL	50.00	cont regular grp.
PRESOTT FRI NIGHT	AZ	21.47	cont regular grp.
FLAGSTAFF SAT NEW STRAW	AZ	17.25	cont regular grp.
OAKLAND FRI FOCUS ON FANTASY & INTRIGUE	CA	93.69	cont regular grp.
SAN FRANCISCO THU FOCUS ON ANOREXIA	CA	80.00	cont regular grp.
BERKELEY SAT IN THE SOLUTION BIG BOOK	CA	63.37	cont regular grp.
SAN FRANCISCO MON BUILDING PARTNERSHIPS	CA	60.00	cont regular grp.
SAN FRANCISCO TUE HEALTHY INTIMACY	CA	50.00	cont fin. crisis
WEST HOLLYWOOD TUE KEEPING CURRENT	CA	49.60	cont regular grp.
SALINAS WED	CA	49.00	cont regular grp.
SAN FRANCISCO SUN	CA	48.08	cont regular grp.
SAN FRANCISCO MEN'S GATHERING	CA	46.00	cont regular grp.
OAKLAND WED MEN'S	CA	42.00	cont regular grp.
ENCINITAS MON STEP STUDY/GETTING CURRENT	CA	40.00	cont regular grp.
MODESTO SUN NEW LIFE-NEW LOVE	CA	40.00	cont regular grp.
SANTA BARBARA SUN WOMEN'S STEP STUDY	CA	40.00	cont regular grp.
SAN FRANCISCO WED FOCUS ON WITHDRAWAL	CA	37.85	cont regular grp.
BAKERSFIELD MON	CA	32.00	cont regular grp.
SANTA CRUZ MON ANOREXIA	CA	30.00	cont regular grp.
SAN FRANCISCO THU NEWCOMERS	CA	28.00	cont regular grp.
FORT BRAGG THU	CA	25.00	cont regular grp.
SANTA CRUZ MON MEN'S FREEDOM -- Dec., Jan., Apr Contribution	CA	21.99	cont regular grp.
SAN LUIS OBISPO SAT	CA	20.00	cont regular grp.
LONG BEACH TUE	CA	16.00	cont regular grp.
SAN FRANCISCO SAT NIGHT STEP STUDY	CA	14.90	cont regular grp.
TORONTO GROUPS	CANADA	96.51	cont regular grp.
HALIFAX WED PIONEER GRP.	CANADA	39.06	cont regular grp.
TORONTO SAT HOPE & RECOVERY	CANADA	28.00	cont regular grp.
NEW BRUNSWICK FRI AFTERNOON LIGHTHOUSE	CANADA	20.00	cont regular grp.
DENVER SAT MORNING SISTERS	CO	82.55	cont regular grp.
FAIRFIELD SUN REACHING OUT ANOREXIA	CT	80.00	cont regular grp.
HARTFORD SAT LOOKING INWARD	CT	80.00	cont regular grp.
WESTPORT SAT THE RECOVERY BUS	CT	75.60	cont regular grp.
CONNECTICUT INTERGROUP	CT	75.00	cont regular grp.
NEW HAVEN MON SERENITY IN SOBRIETY/NEW HOPE & NEW HAVEN FRI HONEST, OPEN, & WILLING	CT	72.00	cont regular grp.
HARTFORD MON TOPIC & DISCUSSION	CT	60.80	cont regular grp.
HARTFORD THU STEP INTO THE LIGHT	CT	48.00	cont regular grp.
HARTFORD FRI TEXT STUDY	CT	45.00	cont regular grp.
HARTFORD SUN GOLF HOUSE STEP-UP	CT	40.00	cont regular grp.
HARTFORD WED BEGINNERS	CT	40.00	cont regular grp.
WILLIMANTIC MON	CT	40.00	cont regular grp.
WATERBURY WED SAFE TO BE REAL	CT	24.65	cont regular grp.
WEST PALM BEACH STEP BY STEP	FL	80.00	cont regular grp.
TAMPA BAY INTERGROUP--Gratitude Dinner	FL	56.00	cont regular grp.
LANTANA SUN KEEP IT SIMPLE STEP	FL	45.00	cont regular grp.
LANTANA THU WOMEN'S HEALING	FL	39.00	cont regular grp.
TARPON SPRINGS THU	FL	30.00	cont regular grp.
INVERNESS TUE	IL	90.00	cont regular grp.
CHAMPAIGN SAT	IL	12.35	cont regular grp.
CAMBRIDGE MON MEN'S STEP	MA	96.00	cont regular grp.
NEWTON WED MAINLY FOR LOVE ADDICTS	MA	75.00	cont regular grp.
WORCESTER FRI STEP	MA	60.00	cont regular grp.
NEWTON TUE/FRI NOON GETTING CURRENT	MA	50.00	cont regular grp.
WAREHAM SUN STEP	MA	50.00	cont regular grp.
PITTSFIELD MON	MA	44.00	cont regular grp.

Name/Group	State/Country	Credit Amt	Reason
NEWTON CORNER TUE FUNDAMENTALS/BEGINNERS	MA	43.00	cont regular grp.
NORTHAMPTON SUN ANOREXIA	MA	40.50	cont regular grp.
WORCESTER WED NEW HOPE	MA	40.00	cont regular grp.
NEWTON MON PARTNERSHIPS IN RECOVERY	MA	38.80	cont regular grp.
JAMAICA PLAIN SUN ANOREXIA	MA	31.54	cont regular grp.
HAVERHILL THU STEP	MA	30.00	cont regular grp.
BROOKLINE SAT TOPICS IN RECOVERY/BEYOND 1 YEAR	MA	20.00	cont regular grp.
WAREHAM WED	MA	20.00	cont regular grp.
WEYMOUTH SUN HOPE & RECOVERY	MA	14.60	cont regular grp.
BULK MAILING RAFFLE	MA	7.00	cont regular grp.
COCKEYSVILLE THU COURAGE	MD	50.00	cont regular grp.
SLAA SUPPORT ONLINE, HYATTSVILLE -- Neata in recognition of support	MD	50.00	cont gratitude
LEWISTON GROUP	ME	52.80	cont regular grp.
MICHIGAN INTERGROUP	MI	25.00	cont regular grp.
DETROIT LAKES TUE	MN	24.00	cont regular grp.
RALEIGH FRI	NC	60.00	cont regular grp.
BOONE THU MEN'S	NC	5.26	cont regular grp.
SALEM TUE ORIGINAL GROUP	NH	50.00	cont regular grp.
CONCORD SUN BIG BOOK STEP STUDY	NH	48.35	cont regular grp.
STRATFORD FRI FELLOWSHIP	NJ	79.79	cont regular grp.
CHERRY HILL THU ANOREXIA/HEALTHY RELATIONSHIPS	NJ	50.00	cont regular grp.
CHERRY HILL TUE DISCUSSION	NJ	40.00	cont regular grp.
GIBBSBORO MON	NJ	16.00	cont regular grp.
ALBUQUERQUE TUE TOOLS OF RECOVERY	NM	20.00	cont regular grp.
ALBUQUERQUE INTERGROUP	NM	10.40	cont regular grp.
NEW YORK SUN MEN'S QUALIFICATION	NY	75.75	cont regular grp.
NEW YORK SUN FEELINGS QUALIFICATION	NY	72.80	cont regular grp.
SARATOGA SPRINGS THU INSIDES OUT	NY	50.00	cont regular grp.
EAST HAMPTON SAT 'HOME'	NY	40.00	cont regular grp.
ALBANY SAT SHAMEBUSTERS	NY	34.10	cont regular grp.
MELVILLE FRI WOMEN'S SERENITY	NY	30.00	cont regular grp.
NEW YORK WED ROTATING TOPIC	NY	7.00	cont regular grp.
MIDDLEBURG HEIGHTS WED NEW LIFE	OH	85.00	cont regular grp.
STRONGSVILLE TUE	OH	46.00	cont regular grp.
PHILADELPHIA FRI 2 HATTER	PA	80.00	cont regular grp.
BETHLEHEM THU	PA	75.00	cont regular grp.
WESTVIEW WED AFTERNOON TWELVE & TWELVE	PA	48.00	cont regular grp.
BRYN MAWR TUE PROMISES	PA	40.25	cont regular grp.
PHILADELPHIA MON BEGINNERS	PA	40.00	cont regular grp.
READING SUN BIG BOOK DISCUSSION	PA	40.00	cont regular grp.
WALLINGFORD SAT/SUN FREEDOM	PA	30.00	cont regular grp.
DOYLESTOWN TUE STEP	PA	20.00	cont regular grp.
EAST STROUDSBURG TUE	PA	20.00	cont regular grp.
PROVIDENCE MON	RI	80.00	cont regular grp.
WARWICK SUN SERENITY	RI	29.40	cont regular grp.
PROVIDENCE TUE & THU MORNING SUNRISE SERENITY	RI	15.60	cont regular grp.
BARTLETT SAT WOMEN'S	TN	53.00	cont regular grp.
AUSTIN/CENTRAL TEXAS INTERGROUP	TX	69.85	cont regular grp.
AUSTIN SAT WOMEN ON THE PATH	TX	51.20	cont regular grp.
AUSTIN THU STEP	TX	25.00	cont regular grp.
HOUSTON INTERGROUP	TX	20.66	cont regular grp.
MANCHESTER THU	UNITED KINGDOM	50.00	cont regular grp.
BETHEL TUE AGAPE	WA	50.00	cont regular grp.
ANONYMOUS		94.00	cont regular grp.

THERE BUT FOR THE GRACE OF GOD \$.01—\$4.99
Jan-Apr, 2005 Average for category = \$1.59 per GROUP

SAN JOSE MON-SAT NOON	CA	0.64	cont regular grp.
ATLANTA SUN	GA	0.65	cont \$ leftover
CAMBRIDGE FRI MEN'S	MA	0.10	cont Round-Up

EASTHAMPTON SAT 'HOME'	NY	0.16	cont Round-Up
DALLAS/FARMERS BRANCH ALPHA GROUPS	TX	3.98	cont Round-Up
MORGANTOWN WED "SERENITY NOW!"	WV	4.00	cont regular grp.

When making contributions, please clearly mark how you would like them attributed. If your contribution is not listed or has been misattributed, please let us know so that it can be corrected!

Individual Contribution Summary (January-April, 2005)

RECOVERY CIRCLE \$10,000.00 AND UP Jan-Apr, 2005 Average for category = \$150,000 per person

Name	State/ Country	Credit Amt	Reason
ANONYMOUS--Endowment Fund		150,000.00	cont regular indiv.

GOLDEN BRAID LEGACY GIVERS \$1,000.00--\$9,999.99 Jan-Apr. 2005 Average for category = \$1,000.00 per person

STAN F.	CT	1,000.00	cont regular indiv.
---------	----	----------	---------------------

GRATITUDE GIVERS \$500.00--\$999.99 Jan-Apr, 2005 Average for category = \$500.00 per person

DARRELL H.--In Gratitude of 12 years in this program	AR	500.00	cont gratitude	NANCY S.--In Gratitude	OR	500.00	cont gratitude
--	----	--------	----------------	------------------------	----	--------	----------------

SPONSORS OF THE AUGUSTINE FELLOWSHIP \$250.00--\$499.99 Jan-Apr, 2005 Average for category = \$240.00 per person

DAVE M.	OH	400.00	cont regular indiv.
---------	----	--------	---------------------

YOU ARE NOT ALONE CLUB \$100.00--\$249.99 Jan-Apr, 2005 Average for category = \$139.00 per person

BOB M.	OH	100.00	cont regular indiv.	EUGENE M.	PA	100.00	cont regular indiv.
BRIAN D.	CA	150.00	cont regular indiv.	JOAN S.--Thank You	WI	100.00	cont gratitude
Chuck	IL	100.00	cont regular indiv.	JOHN C.	OH	100.00	cont regular indiv.
DALE W.--ABM DINNER CONTRIBUTION	CA	200.00	05 ABM,misc	KEN A., IN KIND CONTRIBUTION	IN	200.00	cont regular indiv.
ED & BETTY F.	PA	125.00	cont regular indiv.	KIRK K.	MI	200.00	cont regular indiv.
EDWARD M.	CT	130.00	cont regular indiv.	LARRY F.--ABM DINNER CONTRIBUTION	CA	100.00	05 ABM,misc
ELLIOTT K.	NY	100.00	cont regular indiv.	LH	RI	115.00	cont regular indiv.
EMILY B.--In Gratitude	WA	165.00	cont gratitude	TOM K.	MA	200.00	cont regular indiv.

FRIENDS OF THE FELLOWSHIP \$5.00--\$99.99 Jan-Apr, 2005 Average for category = \$31.75 per person

ANDREA D.--ABM DINNER CONTRIBUTION	CA	30.00	05 ABM,misc
ANONYMOUS	UNITED KINGDOM	15.00	cont regular indiv.
ANONYMOUS	MA	16.00	cont regular indiv.
ANONYMOUS	CA	20.00	cont regular indiv.
ANONYMOUS--ABM Scholarship Fund	PA	50.00	cont regular indiv.
AYANA P.	NY	45.00	cont regular indiv.
BRENDA C.	KS	50.00	cont regular indiv.
CHARLES T.	ME	22.80	cont regular indiv.
CHARLES T.	IL	30.00	cont regular indiv.
CHRIS S.--# SLAA ONLINE SUPPORT	TX	5.00	cont regular grp.
COLLEEN L.	CANADA	50.00	cont regular indiv.
D. M. B.	UNITED KINGDOM	12.00	cont regular indiv.
DANNY S.	MT	25.00	cont regular indiv.
DAVID N.--ABM DINNER CONTRIBUTION	CA	50.00	05 ABM,misc
GEORGE M.	OH	25.00	cont regular indiv.
GERALD S.	FL	25.00	cont regular indiv.
GLEN M.--In Memory of Mabel M. & In Gratitude	WA	85.00	cont In Memoriam
GREGORY G.	CO	20.00	cont regular indiv.
JACQUES P.	RI	25.00	cont regular indiv.
JAMES H.	FL	40.00	cont regular indiv.

JAMES N.--ABM DINNER CONTRIBUTION	CA	20.00	05 ABM,misc
JANET C.	FL	39.00	cont regular indiv.
JONAS H.	SWEDEN	25.00	cont regular indiv.
KURT K.	PA	40.00	cont regular indiv.
MAMATA L.	AUSTRALIA	50.00	cont regular indiv.
MARY F.--ABM DINNER CONTRIBUTION	CA	25.00	05 ABM,misc
MICHAEL G.	TX	10.00	cont regular indiv.
PATRICE C.	NY	10.79	cont regular indiv.
PATRICK P.--SLAA SUPPORT@ YAHOO.COM ONLINE MEETING	CANADA	10.00	cont regular indiv.
RICH S.	CO	60.00	cont regular indiv.
SANDY C.	ME	20.00	cont regular indiv.
SARAH W.	UNITED KINGDOM	18.00	cont regular indiv.
SHEILA M.	NY	50.00	cont regular indiv.
SPENCER M.	CT	25.00	cont regular indiv.
STEVEN B.--ABM DINNER CONTRIBUTION	CA	25.00	05 ABM,misc
SUE W.	NY	5.00	cont regular indiv.
TODD M.	VT	25.00	cont regular indiv.
TOM L.	MA	70.00	cont regular indiv.
WALTER L.	NY	50.00	cont regular indiv.
WILLIAM D.	GA	50.00	cont regular indiv.

THERE BUT FOR THE GRACE OF GOD \$.01--\$4.99 Jan-Apr, 2005 Average for category = \$.93 per person

ANONYMOUS	MA	1.75	cont regular indiv.
ARTHUR P.	MA	3.00	cont regular indiv.
CARLOS J.	BRAZIL	1.61	cont regular indiv.
CHERLYN C.	TX	0.10	cont \$ leftover
CHUCK C.	DC	4.14	cont regular indiv.
CURTIS B.	MA	2.25	cont regular indiv.
DAVID J.	MA	0.10	cont Round-Up
DAVID T.	PA	1.00	cont \$ leftover
DOMINIC K.	NY	0.05	cont \$ leftover
FRED S.	FL	0.30	cont Round-Up

GEORGE C.	CANADA	0.05	cont \$ leftover
JEFF A.	FL	0.12	cont \$ leftover
KEN S.	MA	0.05	cont \$ leftover
KEVIN C.	NV	0.55	cont regular indiv.
MIKE M.	OR	1.00	cont regular indiv.
NATHAN W.	NH	0.60	cont regular indiv.
RONALD M.	GA	0.40	cont \$ leftover
TERRY W.	DC	0.10	cont \$ leftover
WILLIAM P.	CA	0.50	cont regular indiv.

Fellowship-Wide Services says Thank You!

F.W.S. Financial Update—A Creative Membership.

Thanks to the continued support of our Fellowship, F.W.S. has been staying above water and meeting our commitments. With the combination of donations coming in and F.W.S. keeping its expenses down, we are just about breaking even, which is great.

Personally, I am concerned about the fact that contributions and orders drop off significantly during our last quarter every year, and I have not been able to put any money into the Prudent Reserve to help us during those lean months. May is Individual Contribution Month, so perhaps we will get a small bump to make that possible.

Below is the F.W.S. fiscal year 2004-2005 budget update as of April 30, 2005:

<u>1st Quarter</u>	<u>Actual</u>	<u>Budgeted</u>	<u>Differential</u>
Revenues	\$198,630	\$200,253	(\$1,622) <i>Behind</i>
Cost of Goods Sold (COGS)	-\$18,141	-\$21,385	\$3,244 <i>Ahead</i>
Expenses	-\$142,043	-\$179,039	\$36,996 <i>Ahead</i>
Final Income/ (Loss)	\$38,447	(\$172)	(\$38,618) <i>Behind</i>

You will notice that the Contributions Summary has been changed significantly this time around. One of the things we wanted to do was to acknowledge individual contributions in a more obvious way. In coming to this decision, the Board Finance & Operating Committee (BF&OC) and the full Board talked about the creative ways individuals and groups have intentionally raised money for F.W.S. and the fellowship in an effort to help reach the addicts who still suffer, to help keep the lights on here at the office and to express their gratitude for their recovery in S.L.A.A.

I'd like to highlight some of these expressions of gratitude below:

- An anonymous individual sent \$150,000.00 to support the Endowment Fund to help with the longevity of our program.
- Palm Beach County, Florida Intergroup held a special fundraising auction.
- One member saves all the "money" he gets in hand that has the date of the year when he first came into the S.L.A.A. program and donates that on a regular basis.
- Many members continue to "round-up" their monies due for literature orders as a small gesture of 7th Tradition support.

Contributions Breakdown

(See Thermometer for Our Goal!)

October 2004:	\$ 20,455.70
November 2004:	\$ 13,798.98
December 2004:	\$ 8,226.67
January 2005:	\$157,701.30
February 2005:	\$ 8,893.09
March 2005:	\$ 4,934.19
April 2005:	\$ 7,986.03

- Several members send a monthly tithing from their regular earnings.
- About a 1/2 dozen members have an ongoing contribution by credit/debit card, which we charge on a regular monthly basis.
- The Florida Round-Up Committee has consistently donated monies raised from their yearly event and special auction.
- The Los Angeles, California Intergroup has contributed monies to a couple of Foreign Delegates to help them get to the Annual Business Meeting.
- The Tucson Area Intergroup has "adopted" the Conference Literature Committee and not only support them with people to work on projects, but also contributed 7th Tradition to help cover their expenses for the work they have done this year.
- A couple of members have made personal donations to help Foreign Delegates get to the Annual Business Meeting.
- A laser printer and folding machines have been purchased for the use of the F.W.S. office.

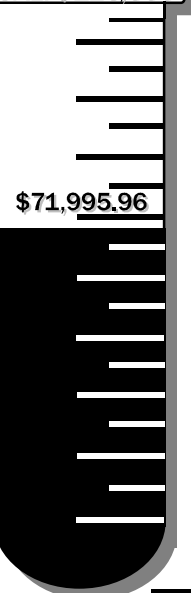
As you can see, there are sooooo many ways for people to contribute and express their gratitude. We want to send our deep appreciation for all the efforts and encourage individuals and members to continue to support our organization in any way they can.

We cannot do this without you!

Jenny Rose Ward
Executive Director, F.W.S.

Contributions

GOAL: \$126,000



(The Most Spiritual Tradition Is 7, Continued from page 1)

financially supporting Fellowship-Wide Services (F.W.S.)—as well as groups and Intergroups. What better way to show a form of gratitude than by giving something of value to F.W.S. that we've actually earned (and could be spending on something else)? If we were able to donate a percentage of what we no longer spend on our addiction (large or small) to F.W.S., we are sharing the gift of sobriety and thereby actively working Step 12, creating the opportunity for spiritual awakenings for ourselves and others.

But because F.W.S. is not an "S.L.A.A. group," it may feel like we are not responsible for its support and that Tradition 7 should not apply. Besides, doesn't F.W.S. make enough money from literature and token sales? Moreover, isn't F.W.S. somewhere close to Boston, so maybe the groups in that geographic should take care of its support! Or, if we're from that region, perhaps we feel that members in other areas should be responsible for F.W.S.'s financial support.

"Consequently, we are responsible for making certain that F.W.S. is financially supported to allow it to continue, to grow, and to thrive!!!"

However, WE ARE ALL PART OF F.W.S.! Yes, F.W.S. is geographically located in offices in N o r w o o d , Massachusetts, but is not some remote organization. F.W.S. consists of people like

Jenny, Ann, Ruth, Nancy, Janet, and a number of dedicated volunteers. And, while F.W.S.'s income is partly derived from literature sales, it actually survives on donations from groups and personal donations from members. Moreover, F.W.S. doesn't simply provide support locally: they provide S.L.A.A. to the entire world with their resources and their availability to answer questions, concerns, and help us all make connections. So as S.L.A.A. members, we are a part of F.W.S. as much as F.W.S. is a part of us. Consequently, we are responsible for making certain that F.W.S. is financially supported to allow it to continue, to grow, and to thrive!!!

In summary, Tradition 7 is a spiritual Tradition. Helping to financially support F.W.S. is part of the spirit of Tradition 7 and is a way of showing gratitude for the Fellowship that provides us a daily reprieve from the insanity of acting out. It's likely that none of us would be sane enough or free enough to be reading this newsletter if it weren't for F.W.S. Accordingly, we may want to keep that in mind as we're determining F.W.S.'s worth to us and what we can afford to contribute.

(BOT Committee Reports, Continued from page 3)

Board Public Relations Committee (BPRC)

During our last in-person BOT meeting at the 2004 ABM, the BOT decided that the BPRC would be restructured. The count would include three BOT members and one F.W.S. staff person to make up the committee, instead of two BOT members and one F.W.S. staff. In fact, due to the different, sometimes unpredictable workload and unfinished projects, we felt the need to add another person, which proved to be very beneficial.

"Our goal for the future is to increase these activities..."

Currently, we have a three co-chair structure with Cristina C. as the overall chair. Cristina is responsible for PI Opportunities, Robin S. is responsible for Product Development, and Deb W. is responsible for Outreach tasks. Ruth G. of F.W.S., is working with the BOT members, either as a group or individually, to support the projects and to act as continuing liaison to the office.

S.L.A.A. public relations involves a wide variety of opportunities and duties, such as following through with media contacts, answering media contact questions, never forgetting we are representing the Fellowship-at-large, being available to outside entities, like medical institutions or courts, and encouraging all members to serve as speakers at different levels. A lot of time is devoted to new literature and publications in general, since this is still a critical area for S.L.A.A. At the moment, new products that will serve as outreach material are being considered and will soon come under study. Another big project that falls on our list is the S.L.A.A. Recovery Convention, which involves lots of dedication and constant interaction with the Local Planning Committee which will be held in San Francisco, California, U.S.A. this year.

I have been serving on the BPIC/BPRC since I became a BOT member in July 2002, and I can really see how things have improved on this Board Committee.

This is a simple, condensed outlook on all our activities. Our goal for the future is to increase these activities, involving interested members through the creation of ad hoc committees; sharing the workload allows us to get more work of the Fellowship completed and with quality and to run more efficiently

Cristina C., Chair, Board Public Relations Committee

Upcoming Retreats & Conferences.

New England Intergroup of Sex and Love Addicts Anonymous

P.O. Box 1375 Brookline, MA 02446-0011
24 Hour Answering Service / Information: (617) 625-7961

S.L.A.A. 12 Step Weekend Retreat

In Chester, Vermont (2 1/2-3 hours from Boston)

Friday, July 22 through

Sunday, July 24, 2005

Questions? You can e-mail the New England Intergroup (NEI) at vtweekend@slaanei.org, or call 617-625-7961 and leave a message referencing the Step Weekend. Visit www.slaanei.org to download the registration form.

Step study is a key tool to recovery in the S.L.A.A. program.

At the retreat weekends we do an intensive study of the 12 Steps -- *together*.

If you have worked on the Steps in this type of format before, you already know its value. If you have not done any study of the Steps, intensive or otherwise, this is a great way to do it, especially the first time. Regardless of where we are in the Step study process, we are able to learn from sharing our experience, strength and hope with each other.

Sharing & Caring

The 11th Annual Sharing & Caring Conference — a day of recovery, fellowship, and fun, with speakers, workshops, meetings, and more.

October 15, 2005
Omaha, Nebraska

For more information visit:
Flyer: www.slaafws.org/local.html



get involved

There are many service committees to which you can offer your talents, from **event planning** to **finances** to **prison outreach** to **literature writing**.

Contact the F.W.S. Office for a complete list of Conference Committees. Board Committees are listed on Page 2.

The 14th Annual S.L.A.A. Florida Roundup

September 16th-18th, 2005
Fort Lauderdale, Florida

Alive
In
2005

Are you looking for answers to recovery from sexual addiction?

Are you looking to connect with like-minded people?

Could you just use more recovery and fellowship?

Are you struggling with Relationship or Sexual Anorexia Issues?

If you answered "YES" to any or all of the above then you should consider attending the 2005 Florida Roundup...

For more information visit:
www.SouthFloridaSLAA.org

Office Corner.

Thank You, Volunteers!

Regular/Drop-In Volunteers

Bob R., RI • Dan A., CA • Ed W., MA • Ron P., MA • Scott, MA • Tom K., MA • Wayne A., CT

January Bulk Mailing

David B., MA • Lisa P., MA • Rita H., Quebec, Canada • Ron P., MA • Tom T., RI • Tom K., MA

Heartfelt thanks to those of you we missed!

Please sign in at the guest book at our next bulk mailing.

If you would like to visit or volunteer at the office, we would love to see you!

Call us at 781-255-8825 or visit
www.slaafws.org/volunteer

F.W.S. Wish List

LCD Monitors

Space-saving and energy-efficient LCD monitors would give staff more desk area to work with, as computer equipment currently takes up about a third of each of our individual work stations.



Carpenters/Help putting up Shelves

We have several construction projects that are on hold because we cannot afford to hire a person(s) to do some of the work—build a cabinet to cover all the internet/phone wires, hang a bathroom cabinet, replace toilet paper holders, put up a ceiling in our copy room to cut down on heating costs.

Subscribe to F.W.S. News!

Domestic & Foreign Rates

Note: All groups with a contact address on file with F.W.S. receive a complimentary copy quarterly.

Individuals

☐ One year subscription \$5.00

Groups

☐ One specific issue \$6.50

(1 issue, 10 copies)

☐ One year subscription \$26.00

(10 copies per issue)

Payment Method:

☐ Cash ☐ Check ☐ Money Order ☐ VISA ☐ MasterCard

Mail to: _____

Tel #: _____ Order Date: ____/____/____

Credit/Debit Information Below

Card#: _____ Exp. Date: ____/____/____

IF DIFFERENT FROM SHIPPING:

Bill to: _____

Return this form to
F.W.S., P.O. Box 338, Norwood, MA 02062-0338 USA
Tel: (001) 781-255-8825 / Fax: (001) 781-255-9190
Email: orders@slaafws.org

DEADLINES

September 17, 2005 F.W.S. News & Bulk Mailing

- **08/01/2005** article submissions are due
- **08/15/2005** announcements for the F.W.S. Newsletter are due
- **09/05/2005** flyers copied by us to be included in the Bulk Mailing
- **09/12/2005** flyers provided by you to be included in the Bulk Mailing
- **09/17/2005** Bulk Mailing

Board of Trustees Meeting Minutes Summary.

November 20, 2004

- Two letters were approved to be sent to the San Francisco/East Bay Intergroup and the "Act With Courage" (AWC) groups in the area. This was regarding Tradition violation concerns at the group level. These letters required content updates following the discovery that the AWC groups were not registered with F.W.S.
- There was discussion regarding Business Meeting Item Summary (BMIS) item #04o14/02-05 (Travel Equalization Fund change), which was passed at the 2004 Annual Business Meeting. A motion was made by the Board Finance & Operating Committee recommending that the motion not be implemented. It was then tabled to the January 2005 BOT meeting, as the Board did not want to pass a motion to not implement the BMIS item without having a replacement policy.
- The Board discussed implementation recommendations for BMIS item #04n27/04-03 (Conference Committee Accountability). The motion was tabled to the March 2005 BOT meeting.

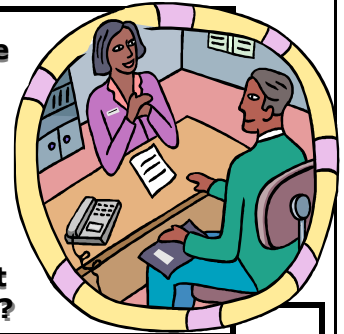
January 22, 2005

- The BOT passed a motion for an implementation recommendation of BMIS item #04o14/02-05: To amend the Travel Equalization Fund (TEF) policy, as follows: (a) all TEF participants who travel over 500 miles are eligible for the TEF; (b) all TEF participants MUST submit a copy of their travel receipt by a pre-set deadline by F.W.S.; (c) all TEF participants will be eligible for a percentage of actual cost of ticket or economy class--whichever is least--from the equalization monies collected; and (d) there will be an \$800 maximum allowance for all TEF participants.
- In an effort to cut F.W.S. costs, a motion was passed to allow BOT members to choose whether they want BOT meeting packages sent by postal mail or email.
- A motion passed to adopt a weighted average calculation in making quarterly distributions from the endowment fund, which would take the total market value of the fund at the end of each fiscal quarter and calculate a weighted average of the last sixteen of such quarters (or lesser amount until the fund has been in existence for sixteen quarters). The weighted average thus determined would then be multiplied by 1.25% to determine the amount of the quarterly distribution from the fund to F.W.S.
- Based on the previous motion, the BOT confirmed the transfer of the quarterly funds from the endowment fund to the general fund for quarters ending June, 2004, September, 2004 and December, 2004.
- A motion failed to established a policy of the full

BOT confirming, by vote, the transfer of the quarterly Endowment Fund Amounts by putting the issue on the agenda at the first BOT meeting after the end of each quarter.

- Discussion took place regarding the Greater Delaware Valley Intergroup (GDVI) and the relationship to F.W.S.
- The Board discussed recommendations regarding a potential compensation adjustment for the Executive Director in conjunction with her Annual Performance Review.

How would YOU like to be an invaluable resource to not only your local group or intergroup, but also to the fellowship around the world, all from the comfort of your own phone?



The Board and F.W.S. are in need of volunteers for the Human Resources Committee: the committee that acts as consultant to the office in matters that pertain to all staff. This is a non-authoritative body, one that does not impose operating decisions on the staff. Instead, the HRC assists office staff in focusing on existing policies and procedures and the best way to implement them when questions or needs arise.

The HRC generally meets for consultative interviews with employees and once a year for performance evaluations. Our committee description calls for 2 Board members and 2 or 3 non-Board members, with two members local to the Boston area. At present time, we are in need of the 2 or 3 non-Board members, preferably volunteers with human resources and/or personnel management experience, either professionally or on a volunteer basis. Other qualities could include: the ability to gain trust by staff, patience, flexibility, maturity, sensitivity, fairness, availability to staff during evening hours (if needed), and knowledge of state and federal laws regarding employment. The ability to maintain confidentiality is of utmost importance.

If you think you have something to offer your recovering community, please do step forward and help all of us in this vital service~ remember, we give back what we continue to so freely receive!

Contact Jenny or Deb at F.W.S. (781) 255-8825 OR jennyfws@slaafws.org

(A Fork in the Road, Continued from page 7)

centers or counseling offices? Examples of these letters and e-mails (actual mail) include:

"Dear S.L.A.A. World Service, I am a sex and love addict, my name is (omit). We are happy to inform you that S.L.A.A. in Denmark (3 groups) is ready to begin the translating process of the S.L.A.A. literature. We have decided that it is imperative to translate the texts, so that we can give the newcomer literature in Danish and use it on the website."



"Do you know if there are meetings in Mexico City?"

"I'm gonna be traveling to Stockholm and I'm wondering if you know if there is an S.L.A.A. meeting going on there?"

"I need to know (because people asked me...) how an online meeting works, and all the guidelines in order to start one in Italian. Do the timetables, like ET, mean Eastern Time? And what is this time about?"

"I'm a member of S.L.A.A. in Amsterdam, the Netherlands. I have often wondered why our fellowship is called the 'Augustine Fellowship' – has Saint Augustine anything to do with S.L.A.A.?"

"I'm a recovering sex and love addict and I'm currently secretary for one of the fellowship groups in Manchester, England. I've got a couple of questions I hope you can answer..."

"Let me know if anyone contacts you because we sure could do with a meeting here. (Vietnam...)"

"I do services for S.L.A.A.-Denmark ... we are very small here... and don't really have a structure yet...can you help?"



"I am from the Auckland Intergroup of S.L.A.A. and we need some more literature."

"On October 14, 2003, you answered an e-mail to me. I was desperate. You were helpful and kind and directive. You set me up with a sponsor. I just wanted to say thank you. I will never forget your kindness. Although I did not stay with my sponsor, I moved over into (omit) and found there exactly the structure and assistance I need and have been working closely with a sponsor there. I am working on my 4th step. Thank you for all that you do. You saved my life that day. God Bless."

"Please let me know if there are any group meetings in the

(omit) area of (omit), anywhere within 20 miles or so of (omit). Thank you so much, and God bless you for the work you are doing. It is invaluable."

"Please let me know how 'safe' the online meetings are for a client of mine."

"I feel utterly lost and hopeless and need some help ..."

We could opt for the road we currently see, an office with minimal staffing and basic functions. However, if we had the funding we needed and more, we could, first, replace those office functions that were terminated due to cost, such as the Long Distance Sponsorship Program. We could hire a person, or persons, dedicated to fundraising, research and development, and legal, copyright, and translations issues. We could hire translators so that our literature could be printed and read in many languages. We could offer more competitive salaries for our dedicated staff members and research more cost effective means in office operations. The Conference Committees would have enough funding to carry out their work. We could develop a streamlining process for literature development, in order to increase our product line. We could look at ways to expand, strengthen, and stabilize our Fellowship, perhaps by developing a system of regionalism (an all-inclusive and worldwide organization) or by developing an advisory board, one that could travel to other areas in the world to carry the message and to unify our efforts to reach the still suffering addict. We could look at ways to increase our Outreach efforts. We are no longer a U.S. Fellowship. We have to remember that we are a worldwide Fellowship and that there are sex and love addicts that still suffer outside the U.S.

Ask yourself, which way at the fork in the road do you want to go? The uncommon road might be to continue to embrace the 7th Tradition and increase your personal donations, because you understand that our office has to deal with inflation and the use of latest technologies in order to carry out even its basic functions. And, it would also mean that you might foresee the need to attend to our fellows abroad and offer them the same hope and the same help that those in the U.S. have received. We are in charge of moving our Fellowship to a place of growth and stability. If we choose this uncommon road, which is to push our Fellowship into a worldwide organization, we might be able to reflect over the decisions we have made (that of the greater good), and like Frost, discover they have made "all the difference."

Board Public Relations Committee



Meeting Changes.

Newly Registered Meetings

Germany

International SLAA Online
Magdeburg Wed

Ireland

Co. Dublin - Dublin Wed Tram Line Mtg.

Sweden

Malmo Mon

Thailand

Bangkok Tue & Thu First

United Kingdom

Liverpool Area Contact

United States

Alabama - Daphne Fri Discovery
Alabama - Huntsville Fri Hopeful
Arizona - Glendale Sat Dragon SLAAers
California - Auburn Wed
California Beach Cities - Orange Country Intergroup
California - Berkeley Wed Recovery
California - Mountain View Tue Women's
Connecticut - Norwich Thu
Delaware - Rehobeth Beach Thu
Delaware - Wilmington Sat
Florida - Pompano Beach Sample Road Grp.
Florida - Sarasota Sun Women's
Florida - South Florida Intergroup
Florida - Stuart Sat Night Alive
Hawaii - Maui Wed
Iowa - Des Moines Tue
Maryland - Forestville Sat
Mississippi - Hattiesburg Tue
New Jersey - Bloomfield Wed Women's
New Jersey - Englewood Wed
New Jersey - Hohokus Mon the Possibility Grp.
New Jersey - Lafayette Sat
New Jersey - Marlton Co-S.L.A.A.
New Jersey - Mays Landing Tue
New Jersey - Paramus Wed
New York - Babylon Sat
New York - New York Wed GLBT
Pennsylvania - Paoli Wed
Pennsylvania - Philadelphia Mon Women's
Pennsylvania - Philadelphia Sat
Pennsylvania - Philadelphia Sun
Pennsylvania - York Sun
Tennessee - Nashville Mon Free At Last
Virginia—Blacksburg Mon

Disbanded Meetings

Denmark

Odense Tue

Germany

Konstanz Wed

United States

Arizona - Phoenix Fri
California - Bakersfield
California - San Francisco Sat Step Study
Florida - Miami Mon & Fri En Espanol for Gay Men
Florida - Miami Beach Mon
New Jersey - Milltown Tue
North Carolina - Asheville Tue Light of Hope
Ohio - Cleveland Mon
Ohio - Fairlawn Fri
Pennsylvania - York Wed
Texas - El Paso Tue Tape Study
Washington - Kirkland Tue Women's Brown Bag
Tue Women's

A Full Year of S.L.A.A. Experience!

That's what you receive when you subscribe to *the Journal*, Published in six double issues per year (approximately 30 pages each), it's like a "meeting in print" each issue, with stories, articles and letters by S.L.A.A. members.

Subscribe to the Journal by:

Visiting our online store at—

www.slaafws.org/store

Or by contacting the F.W.S. office at—

Mail to: P.O. Box 338, Norwood, MA 02062-0338, USA OR

Phone: (001) 781-255-8825

Fax: (001) 781-255-9190

Email: info@slaafws.org

Make checks payable to *the Journal*.

Foreign orders must be payable in U.S. Dollars and drawn on a U.S. banking affiliate.





NOTICE: Please note due to increase in cost by our vendor, bronze medallions are now \$5.00 each. You will receive a 10% discount on orders of 10 or more.

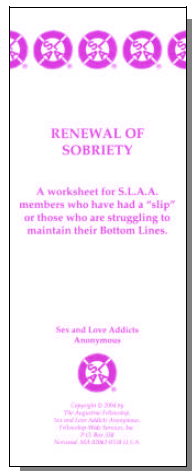
Now Available!

These items are available at our online store: **www.slaafws.org/store**

Contact F.W.S. to order yours today.
P.O. Box 338, Norwood, MA 02062-0338

Tel: (001) 781-255-8825 / Fax: (001) 781-255-9190
orders@slaafws.org

Renewal of Sobriety New Pamphlet



The Renewal of Sobriety was unanimously approved by S.L.A.A. Conference members at the 2004 Annual Business Meeting. This literature provides a tool for members who have had a slip or those who are struggling to maintain their bottomline.

\$1.00 per pamphlet + shipping/handling

Anorexia, Withdrawal, Healthy Relationships & The 12 Steps

Topic Booklets

Compilations of personal stories
from *the Journal*

The Questions Members Ask ...

What kind of behaviors do I put on my bottomline to define my sobriety? How do others overcome the withdrawal in their recovery? How do you change your addictive patterns and take things one day at a time? Will I ever be in a healthy relationship again? How do others work the Steps?

... and the Experience, Strength, & Hope That They Get.

These collections of stories focusing on certain topics are a "meeting in print". Represented in these articles are different sexual orientations, bottomlines, and geographical locations of the S.L.A.A. membership. Each booklet is a separate publication containing 52 pages of personal stories.

\$5.00 per booklet + shipping/handling



See next page for ordering information!

new literature

2005 WORLD DIRECTORY

SPECIAL

Offer good until July 31, 2005.

**Buy A
2005 World Directory and receive a *Journal*
Subscription for 1/2 price.**

NEW — Available June 1, 2005

Purchase the World Directory and/or a Journal
Subscription for your group to help carry the message!

Qty.	Item #	Title	Price	Total
	PAM-016	Renewal of Sobriety	\$1.00	
	JOUR003-01	Anorexia Booklet	\$5.00	
	JOUR003-02	Withdrawal Booklet	\$5.00	
	JOUR003-03	Healthy Relationships Booklet	\$5.00	
	JOUR003-04	Working the Steps Booklet	\$5.00	
	WD-001-2005	2005 World Directory	\$13.00	
	JOURNAL SUBSCRIPTION	1 Year Subscription US/Canada	\$18.00	
	JOURNAL SUBSCRIPTION	2 Year Subscription US/Canada	\$35.00	
	JOURNAL SUBSCRIPTION	1 Year Subscription Foreign	\$21.00	
	JOURNAL SUBSCRIPTION	2 Year Subscription Foreign	\$37.00	
LITERATURE/SUBSCRIPTIONS: New Items Subtotal				+
10% Discount on 101+ Pamphlets				-
10% Discount on 25+ Booklets (any combination)				-
IF YOU ORDERED a World Directory—50 % Discount on Journal Subscription				-
LITERATURE/SUBSCRIPTIONS: New Items TOTAL				=

Contribution & Order

MAY INDIVIDUAL CONTRIBUTION MONTH:
Contribution Total: +

LITERATURE/SUBSCRIPTIONS: New Items Total: +

SUBTOTAL: =

Shipping & Handling: +
(Contact F.W.S. for foreign destinations)

RUSH PROCESSING: +
(same-day processing on weekdays: additional \$10.30)

SUBTOTAL: =

Contribution Round Up: +

Regular Contribution: +

GRAND TOTAL: =

If you choose to
**round up your
order total**, the
funds will be
marked as a *tax-
deductible*
contribution to
the *Fellowship-
Wide Services*
office.

Would you like a contribution
acknowledgement? ☐ Yes ☐ No

Attributed to _____

For a complete list of literature, tapes, and other merchandise, visit
www.slaafws.org/store

Ship To: _____

Tel#: _____ **Order Date:** ____/____/____

Make checks payable to:
The Augustine Fellowship.
All orders must be prepaid in
full. Foreign orders must be
payable in U.S. dollars.

Method of Payment:

☐ Check ☐ Money order ☐ Cash
☐ MasterCard ☐ Visa Exp. date ____/____

Account Number _____

Name on Credit Card (please PRINT) _____

Signature _____

Billing Address (if different from shipping) _____

Telephone# _____

E-mail _____

Shipping/Handling

	Up to \$20	\$20.01-\$40	\$40.01-\$60	\$60.01-\$80	\$80.01 & up
Domestic	\$6.75	\$9.40	\$10.75	\$12.25	Add 17% of subtotal
Canada	\$7.20	\$9.70	\$13.10	\$16.40	Add 22% of subtotal

For foreign shipping/handling prices, please contact F.W.S..

You Are Responsible ...

... for the free info packets we send out and the literature we print
... for the emails we respond to and the phone calls we answer
... for the meeting information we give out and the addicts we support

... for carrying the message.

May is Individual Contribution Month!

Why do we have an annual individual contribution month?

The simple answer is to keep S.L.A.A. financially healthy in order to provide services to help the addict who still suffers. The Board of Trustees and Conference Committees will benefit from your contributions, but our Fellowship's most immediate concern is Fellowship-Wide Services through the financial contributions of members — one member at a time.

Every penny counts. Please, send in your donations — we are self-supporting through our own contributions! Return the completed form below with your check, credit, or debit card.

THIS CONTRIBUTION DOES NOT REPLACE THE USUAL 7th TRADITION CONTRIBUTIONS.

Your contributions are vital for F.W.S. to continue providing services to all that need them! May Individual Contribution Month is just another creative way for us to achieve our budget projections and continue in our primary purpose — to help the sex and love addict who still suffers.

Keep in mind that your donation is TAX DEDUCTIBLE!

May Individual Contribution Month! Send to: F.W.S., P.O. Box 338, Norwood, MA 02062-0338 U.S.A.

Type of contribution: *Please check one*

☐ GROUP/INTERGROUP

(Use sections A, B & C)

☐ INDIVIDUAL

(Use section B)

Please send acknowledgement: ☐ yes ☐ no

☐ RECOGNITION OF AN EVENT

(Use sections B & C)

Section A: Please print all acknowledgement information.

Meeting Day & Time: _____ Meeting Location: (city/state) _____

Group Name: _____

Section B: Please print all acknowledgement information and/or credit/debit card holder information.

Name to which contribution should be attributed: _____

Address: _____

☐ Enclosed is a check(s) or money order(s) made payable to: The Augustine Fellowship in the amount of \$ _____

☐ Please charge my credit/debit card \$ _____

☐ Mastercard ☐ Visa Expiration Date: _____

☐ Please charge my credit/debit card \$ _____ per month for _____ months.

(You will be charged on the 15th of the month. We will send you a notice 1 week prior.)

☐ Mastercard ☐ Visa Expiration Date: _____ Acct #: (print clearly) _____

Name as it appears on credit card: (please print) _____

Cardholder's Address: _____

Cardholder's Telephone# _____ Cardholder's E-mail: _____

Section C: Please check appropriate box(es) & print specific information regarding reason for donation.

☐ Regular group/Intergroup Contribution

☐ _____ Years of Sobriety

☐ _____ Anniversary

☐ Gratitude

☐ Regular Individual Contribution

☐ _____ Birthday

☐ The passing of _____

☐ Marriage of _____

☐ _____ Years of Recovery

☐ Acknowledgement of Member Milestone: (be specific below)

☐ Other _____

(Please note that it is S.L.A.A.'s policy that \$12,000 is the maximum amount an individual may contribute per fiscal year. Please refer to the S.L.A.A. 60/40 pamphlet for more details.)