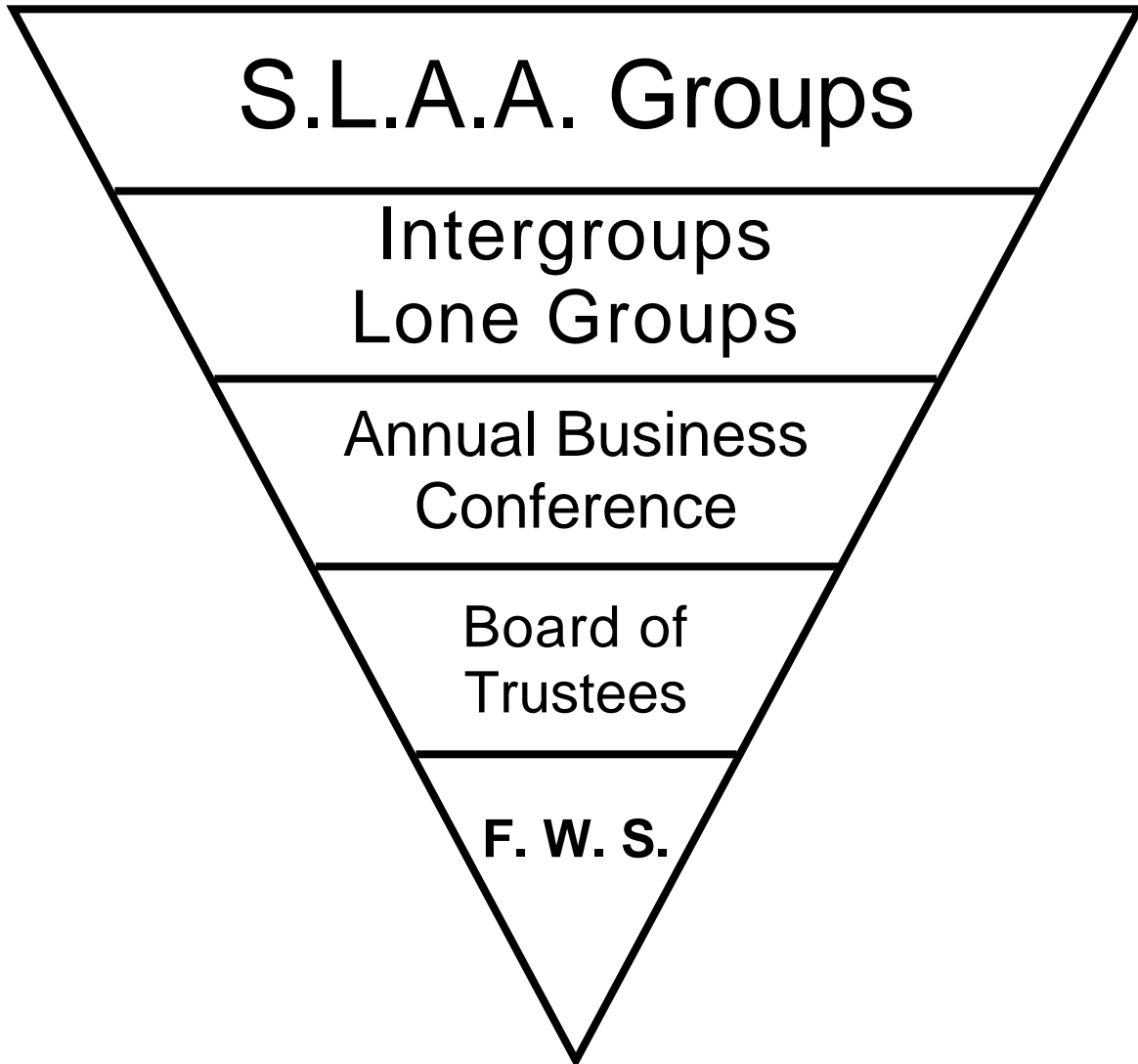


The Service Structure of S.L.A.A.

Excerpted from the Conference Service Manual, pages 3 and 4

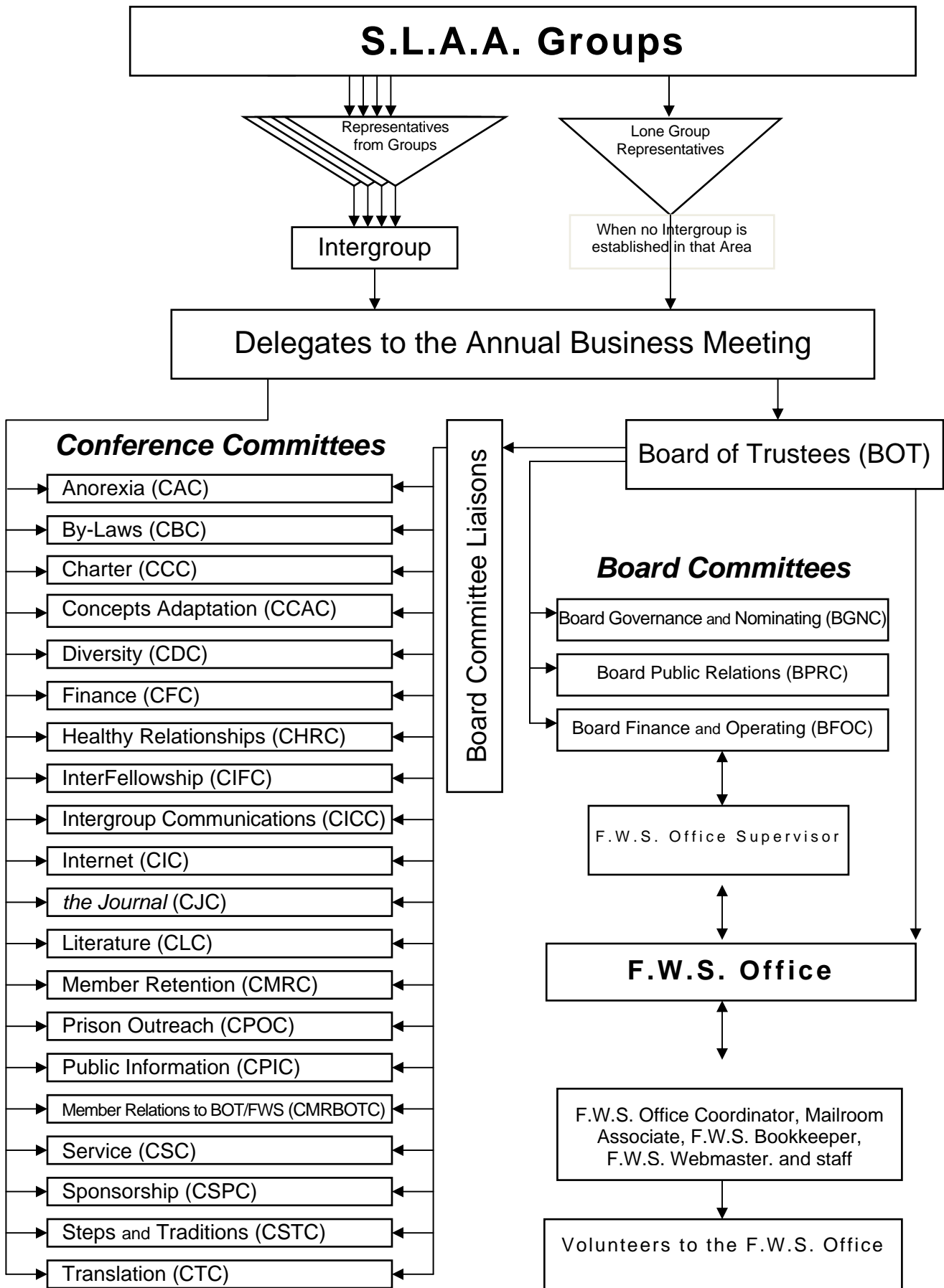
The Inverted Triangle — Responsibility within S.L.A.A.

The inverted triangle, shown below, represents the responsibility structure of S.L.A.A. that begins with individual groups. Service entities of Fellowship-Wide Services and the Board of Trustees are responsible to the Conference, Intergroups, and Groups.



Annual Business Conference Structure

The following organizational chart reflects the process by which groups send representatives to Intergroups. Intergroups and lone groups select delegates to attend the Annual Business Conference, and the Conference divides itself into Conference Committees to accomplish much of the Fellowship's work. The Conference also elects the Board of Trustees which has three Board Committees to manage the legal and business affairs of the Fellowship, as well as oversight of the Fellowship-Wide Services Office, public relations and board governance and nominations.



BFOC approved January 9, 2012
 BOT approved February 25, 2012